



Kent Learning Disability Partnership Board Minutes

Date: Thursday 14 December 2023

Location: This meeting was held virtually via Zoom

Who was there?

Attendees:

Daniel Hewitt - Joint Co-Chair of the Kent LD Partnership Board

Alyson Wagget - KCC, Assistant Director, Social Care and Health (East) Thanet and South Kent Coast

Heather Carolan - KCC, Stakeholder Engagement Support Officer (minutes)

Continued . . .

Who was there? (Continued)

Attendees:

Charlie Clay – Bemix, co-production lead

Cheryll Champion – LDC Care Co, Quality and Compliance Manager

Chris Evans – Parent Carer

Kelly Field – KCC, Adult short break services Manager

Janice Grant – KCC, Assistant Director, West Kent

Jimmy Kerrigan – Kent and Medway ICB, Associate Director for Learning Disability and Autism

Lara Bywater – LDC Care Co, Director

Linda Chapman – Parent carer

Lisa Clinton – KCC, Stakeholder Engagement Manager

Marie Hackshall – System Programme Lead – Learning Disability and Autism

Michael Lillis - Self Advocate, Bemix

Robyn Swirles – KCC, Administration Assistant Apprentice

Sammy Lamb - Self Advocate, Bemix

Steve Chapman – Self Advocate, Bemix

Toni Easdown – KCC, Stakeholder Engagement Officer

Trevor Cave – Self Advocate, Bemix

Trevor Chapman – Parent Carer

Xan Brooker - KCC, Senior Commissioner

Apologies:

Helen Whitehead —KCC, Strategic Housing and Accommodation Project Lead

Ian Brandon- Kent and Medway ICB, Assistant Director of Nursing & Quality

Continued...

Who was there? (Continued)

Apologies (continued):

Jill Haskell — Kent Community Health NHS Foundation Trust

Vanessa Cowley – Self Advocate, East Kent Mencap

Welcome

Welcome from Daniel Hewitt, the joint co-chair of the Partnership Board



Daniel welcomed everyone and went through the housekeeping rules.

Welcome and update from Alyson Wagget, Assistant Director, Social Care & Health, (East) Thanet and South Kent Coast

Adult Social Care Involvement Officers

Alyson asked Lisa Clinton to provide an update on the six Adult Social Care Involvement Officers who are being employed.



The Involvement Officers all have direct or indirect lived experience of social care and health.

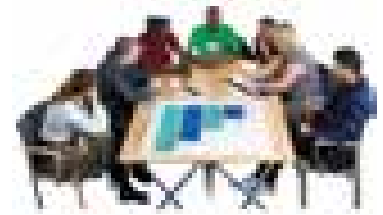
Once they start in their jobs, they will be invited to a future partnership board meeting.

Action: Adult Social Care Involvement Officers to be invited to a future Board meeting.

Update from Alyson Wagget (continued)

Workstreams

There are seven workstreams. An update was shared at the last meeting and the Board were asked if they wanted to get involved.



No one came forward on these.



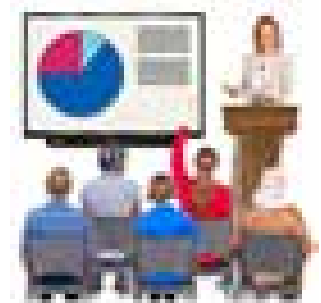
The Board asked if more information could be sent out about these on what the workstreams cover, and details about the meetings (year planner).

Action: Heather to prepare and send out more information about each workstream, including a timeline and overview of meetings, so that Board members can see if they would like to join any of them.

Action: One workstream at a time to be brought to the Board meetings, to tell members more about what that workstream does so they can get involved.

LD&A strategy/ engagement event:

A Learning Disability and Autism strategy event took place on 20 November.



Some members of the Partnership Board went to the event and gave their feedback.

Board members said the event was positive.

A concern raised was that key contacts for people to use when they are having difficulties aren't always known, now there isn't an assigned social worker/ care manager.



Update from Alyson Wagget (continued)

Action: Alyson to share information with the Board on who people should contact if they need support.

Action: Alyson to feedback to the Adult Social Care teams that contacts aren't widely known.

Action: Alyson to update the Board at the next meeting about how Adult Social Care support plans and care packages are decided: who makes the decision, who else is involved, who pays.

Jimmy Kerrigan spoke about a co-production event in the New Year, to discuss making difficult decisions in healthcare funding.

Action: Once the details are known for the co-production event, Jimmy to share the information with the Board.

Carers Strategy/Kent Carer Forum

Janice Grant, KCC Assistant Director, West Kent provided an update on the Kent Carers Strategy group.



Janice co-chairs the group, which looks at all the things related to the Care Act.

There are also carers forums as well.



Action: If any Board members who are carers would like to join the carers' communication delivery group, to let Heather know.

Meadowside short breaks and Community Hub

Kelly Field provided an update on Meadowside short breaks and the Community Hub.

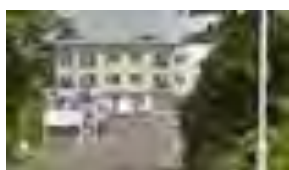


Development works has been underway for the past year and Meadowside short breaks has been closed.

It is due to reopen in the New Year.



The works include Community day service hub moving from Walmer day service into the Meadowside building.

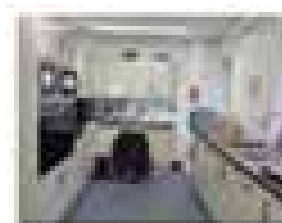


During closure Meadowside has supported people for short breaks in a unit at Westbrook house, Margate.

Meadowside now has new specialist bathrooms, including sensory equipment



There is a new kitchen/dining area, sensory room and snug room.



Action: Kelly would like to hear more about any issues with people returning from short breaks being dehydrated/ not having taken enough fluids.

Action: if any Board members would like to visit Meadowside, to contact Kelly directly at KellyAnne.Field@kent.gov.uk

Partnership Board website update

Heather updated the Board on the work that Paul Jerome has been doing to develop the new website and asked for comments.



Heather also shared some information with the Board before the meeting

Board members gave the following feedback:

- Need to add other formats to the current text: pictures of Board members, etc.
- Is it possible to put an 'intro to the Board' video, for example a film of Daniel?
- Sammy and Daniel said they were interested in being involved.
- First block on the website is hard to read (white writing on purple) - could the font be larger?



Action: All to feedback ideas to Paul Jerome or Heather on what else could be included on the website, and share any links to other information.

Partnership Board co-chair update

Toni updated the Board on the co-design work that has happened since the last meeting.

A small working group was set up to look at appointing a paid co-chair for this board.



The group have had two meetings so far to co-design everything together.



A draft Job Description, Person Specification and Expression of Interest Form is being written based on what the co-design group have said.

These will be shared with the Board for comments.

Partnership Board co-chair update (continued)



A further co-design meeting is happening in January 2024 to review everything.



The recruitment for the co-chair will then start in January/February 2024.

Sammy and Michael said the co-design group has worked well, and they feel that it hasn't just been a tick box exercise. They have been fully involved to co-design everything.



Aly said it would be good to look at why the process has worked well, and what learning can be transferred to co-production in other areas.

Action: Toni to set up a meeting with the co-production group to review this once the co-design work has finished.

Meeting dates for 2024

Thursday 4 April
Thursday 20 June
Thursday 19 September
Thursday 12 December



***COMPLETED* Action: Heather to send meeting dates for 2024 to Trevor Cave.**

Action: Heather to check if one Board meeting could be in-person or hybrid, and suggest suitable location(s) - members to vote on this?

Any Other Business

Use of Facebook & other social media

Heather updated the Board on work that is happening in the Stakeholder Engagement Team to increase the use of Facebook and other social media.



Robyn Swirles and Trevor Cave said they would be happy to support any projects on social media.

Toni said that the communication and co-production workstream had asked for the following point to be raised with the Board.

‘There are learning disability nurses in hospitals, but there isn’t the same provision for autistic people (specialist autism nurses or specialist autism wards) can this be considered?’



Jimmy Kerrigan mentioned the Oliver McGowan mandatory training for learning disability and autism.

Jimmy also said that 3 new posts (in mental health services for autistic people) were being trialled.

Action: Heather to invite Jimmy to a future Communication and Co-production group meeting.

***COMPLETED* Action: Heather to share link to Transforming Neurodiversity Board information with Sammy Lamb.**

Presentations

A copy of minutes from the Kent Learning Disability Partnership Board will be made available on the Partnership’s website:

www.kentldpb.org.uk